

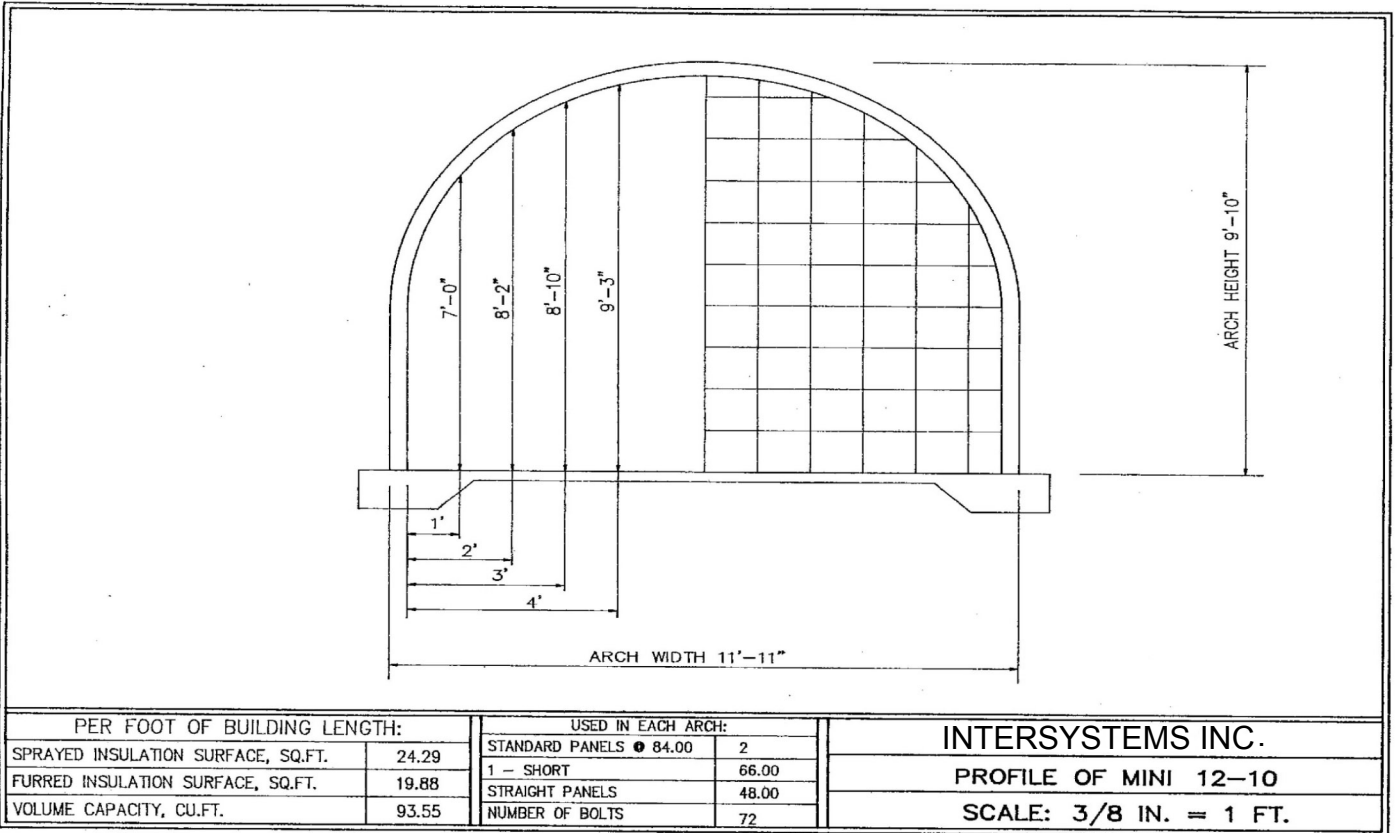


Intersystems Inc.

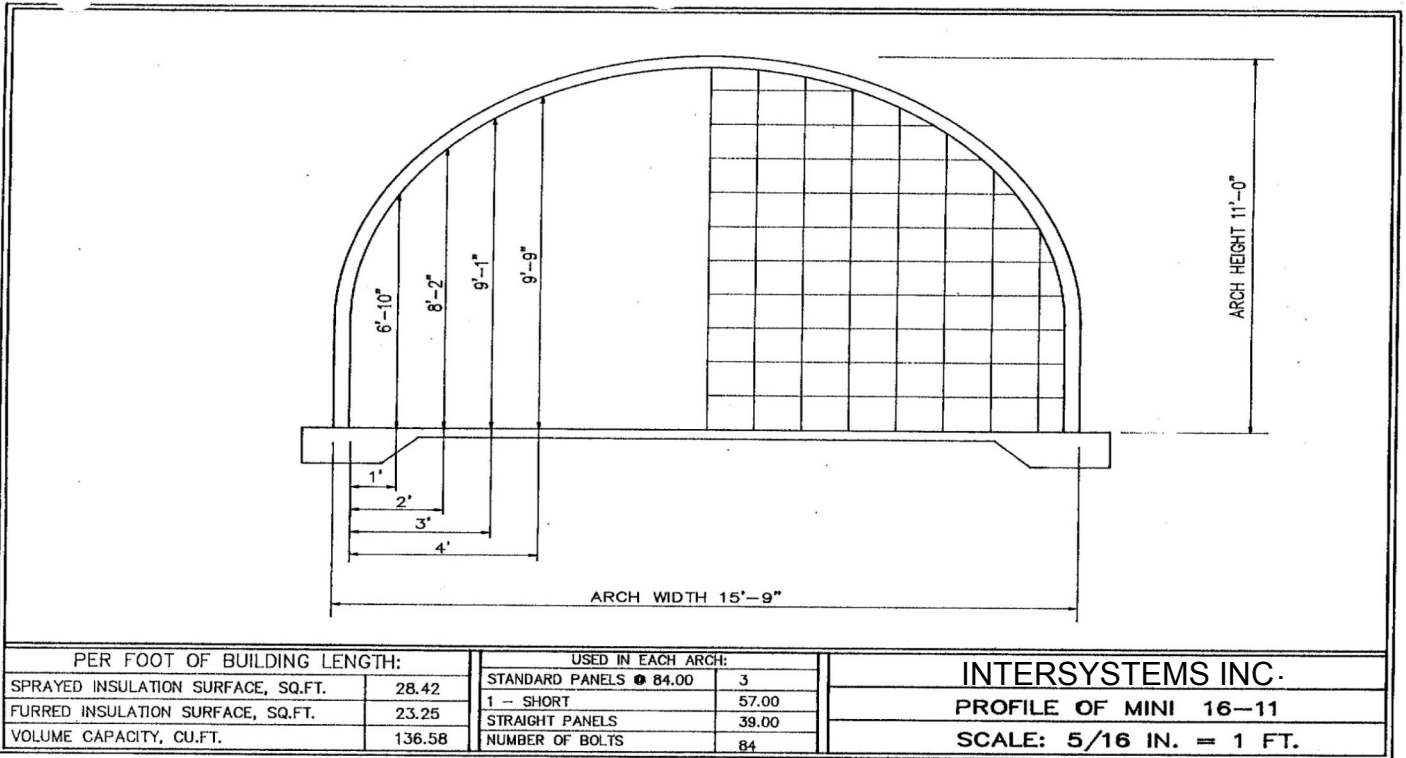
[www.intersystems-rl.com](http://www.intersystems-rl.com)  
[info@intersystems-rl.com](mailto:info@intersystems-rl.com)



Intersystems Inc.



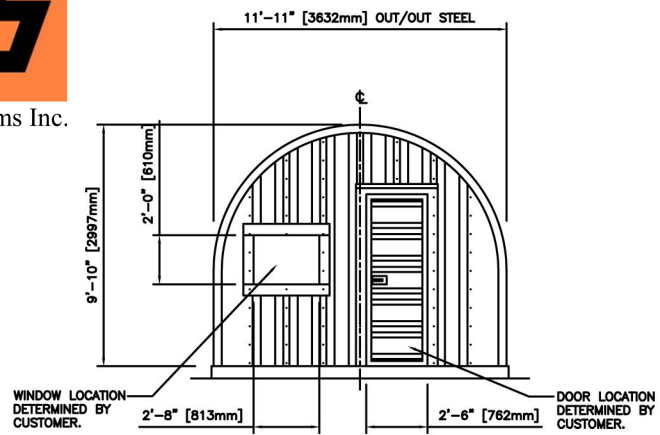
**( 3.7 m ) Wide x ( 3 m ) Height ( 5 m ) Length**



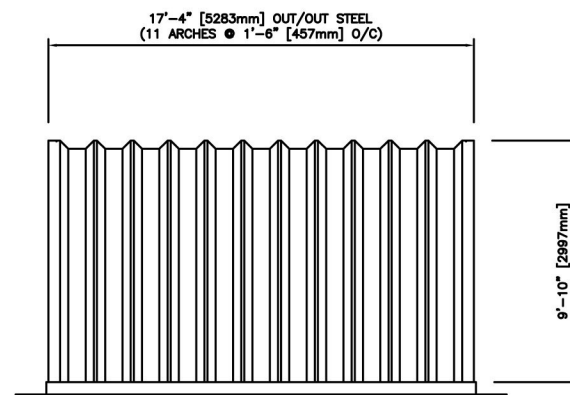
**( 4.9 m ) Wide x ( 3.4 m ) Height ( 6 m ) Length**



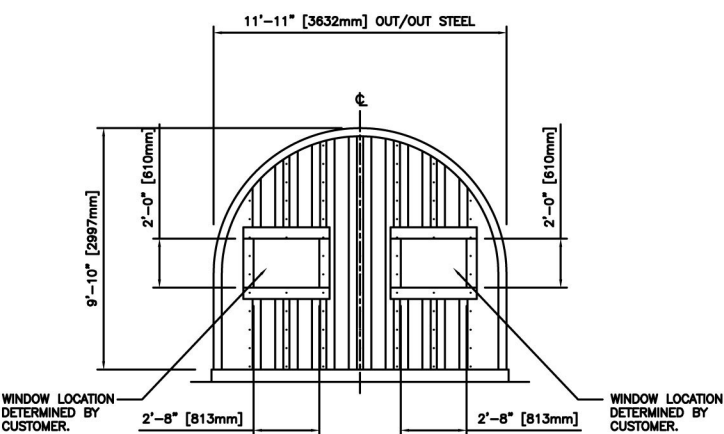
Intersystems Inc.



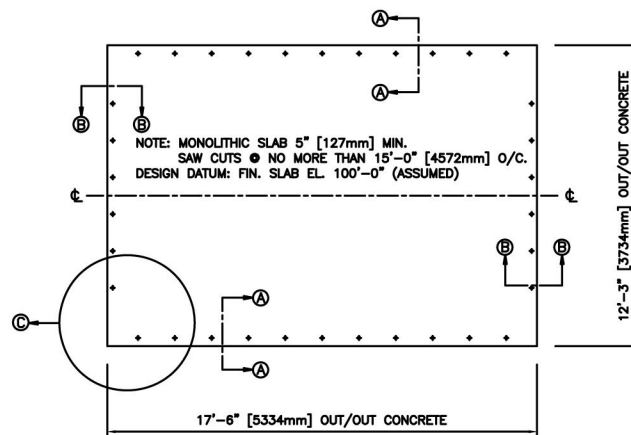
FRONT ELEVATION



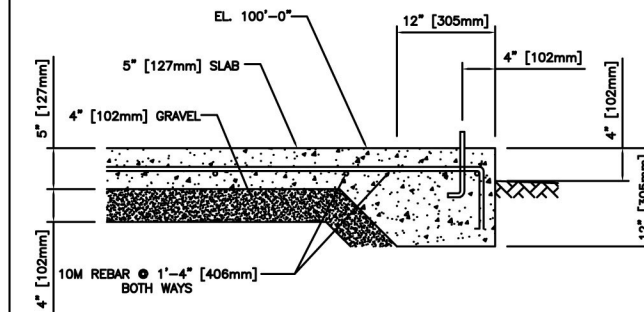
SIDE ELEVATION



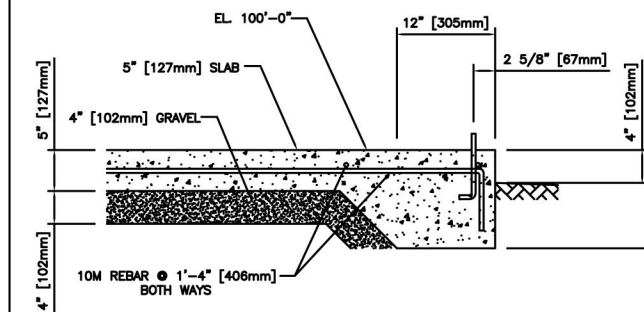
REAR ELEVATION



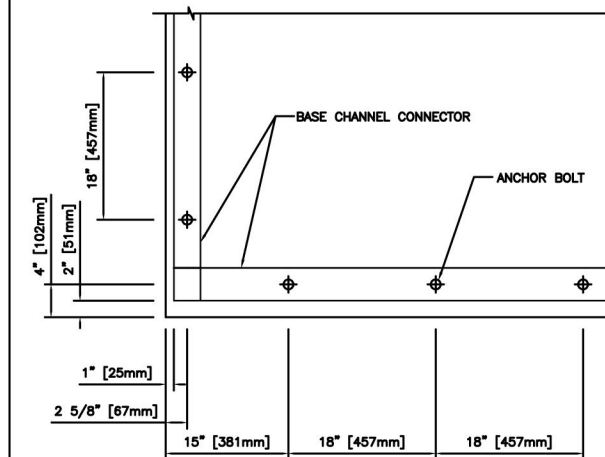
FOUNDATION PLAN



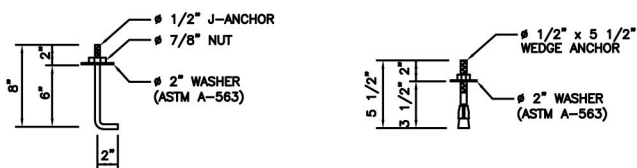
A SECTION (THROUGH SIDE WALLS)  
SCALE 1"=1'



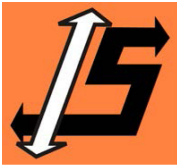
B SECTION (THROUGH END WALLS)  
SCALE 1"=1'



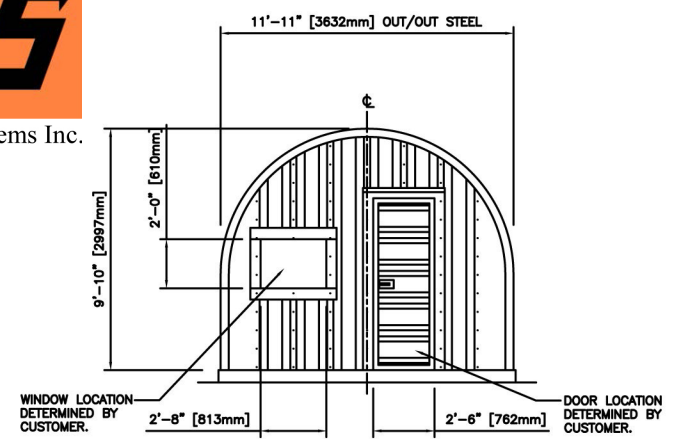
C DETAIL (CONNECTOR LAYOUT)  
SCALE 1"=1'



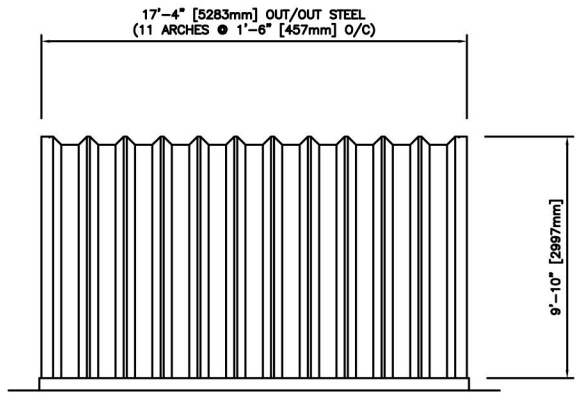
NOTE: USE # 1/2" ANCHOR BOLT A-36 (CONCRETE EMBEDDED 6") OR WEDGE ANCHOR BOLT (ASTM A-607)



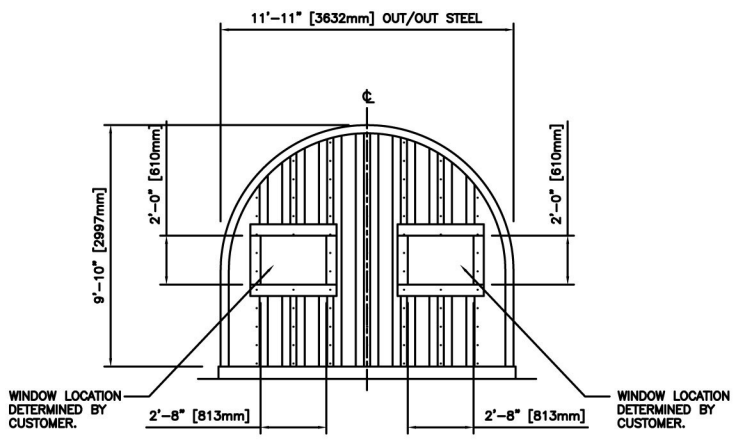
Intersystems Inc.



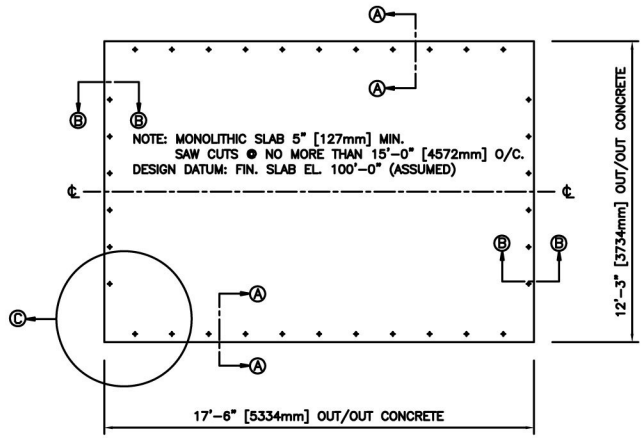
FRONT ELEVATION



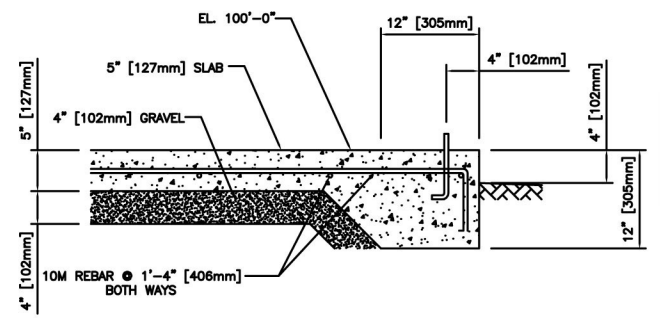
SIDE ELEVATION



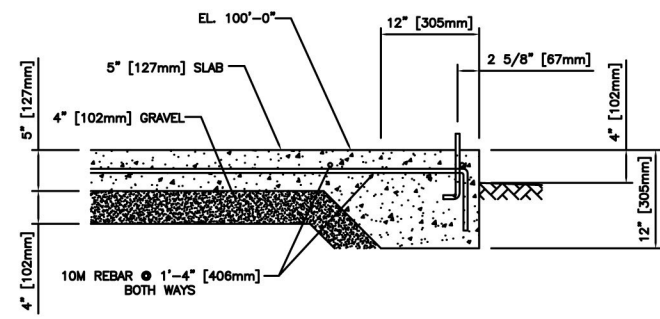
REAR ELEVATION



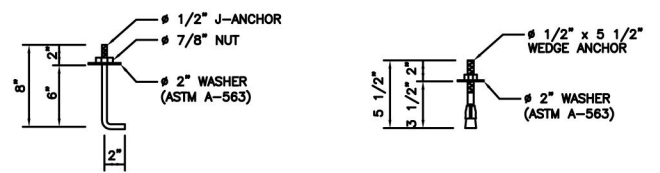
FOUNDATION PLAN



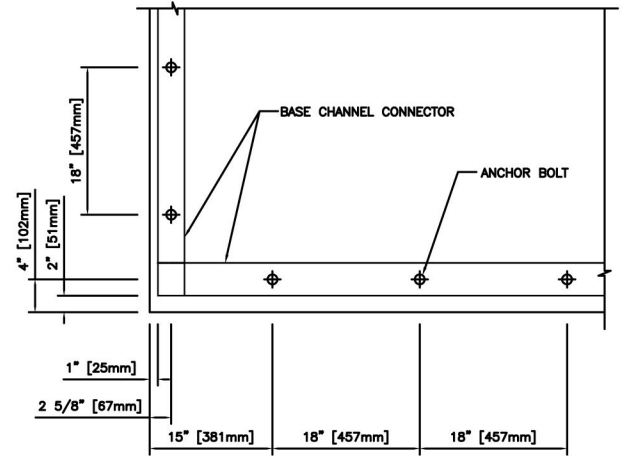
A SECTION (THROUGH SIDE WALLS)  
SCALE 1"=1'



B SECTION (THROUGH END WALLS)  
SCALE 1"=1'



NOTE: USE # 1/2" ANCHOR BOLT A-36 (CONCRETE EMBEDDED 6") OR WEDGE ANCHOR BOLT (ASTM A-607)



C DETAIL (CONNECTOR LAYOUT)  
SCALE 1"=1'